

# Pawsitive Match Newsletter

March 2015

As you may know, over the holidays, Pawsitive Match took in 12 dogs from Milk River, Alberta. We are so pleased to show you the incredible progress that these wonderful pups are making. Over the time they have been in our care, these special dogs have undertaken the formidable journey towards good health, confidence and, ultimately, the readiness to move into their forever homes. As of the end of February, we are very excited to tell you that a number of these amazing dogs are either taking applications or have found new homes!

While it is important to recognize that there is still a great deal of work to be done, we would like to take this opportunity to give our most sincere thanks to all of the individuals and organizations who participated in this rescue:



Thank you to all of the PMRF volunteers, the fundraisers, the vets and vet techs, the SPCA and other Alberta rescues, the groomers, the people bringing in donations, and finally, a massive thank you to the dedicated, selfless, amazing fosters!

Although we hope that what transpired in Milk River will be a once in a lifetime event, we are inspired by the cooperation and dedication of the rescue community and the generosity of the province at large. If you would like to donate to the ongoing care of these animals, please [donate here.](#)

[Adopt](#)

[Foster](#)

[Volunteer](#)

[Donate](#)

[Events](#)

Contact Us On:

[Facebook](#)

[Twitter](#)

[Instagram](#)

[Youtube](#)

[Blog](#)

## Trainer's Tip: Before Aggression

Marianne Rogerson, PhD

Dogs communicate with humans through vocalizations, body postures, and distance-increasing signals, to name a few. If a dog feels threatened or frightened, the first impulse is to flee and create distance-increasing signals. Without this opportunity the dog may resort to fight mode for protection.

Dogs typically identify a critical distance or comfort zone before moving into the fight mode. If this distance decreases, the dog may assume an attack position and the body posture will change quickly.

Common postural changes include ears pulled back against the head, lowering of the head and neck and a shift in body weight in preparation for the lunge.

In an ideal world every dog would present the same communication signals. However, breed, socialization and environment create significant variability and each dog owner must learn to recognize and correctly interpret their dog's communication patterns. Therefore, an effective way to recognize when your dog's behaviour may turn to aggression is to first identify calm behaviour. This is accomplished by observing and noting physical characteristics. Watch your dog as she/he engages in a variety of activities and note how body posture changes with changing events. Video your dog and create a reference library. Recommended resources: 1) *Canine body language: A photographic guide.* (2005), Brenda Aloff 2). *On Talking Terms With Dogs: Calming Signals.* (2006). Turid Rugaas.



pawsitive match  
rescue



### Adoptable Dog of the Month: Mary

Mary is a sweet, curious 2 year old lab cross from Sochi, Russia. With her beautiful, white coat and her adorable, short legs, Mary turns heads wherever she goes. Mary is very chatty and is known to be a bit of a ham. She loves to explore and with the help of a harness, is learning to walk well on a leash. Mary's ideal home would have no young kids (as she needs to continue working on her manners) and a loving, patient owner who can continue to work with her to become her best self.

Contact Us On:

[Facebook](#)

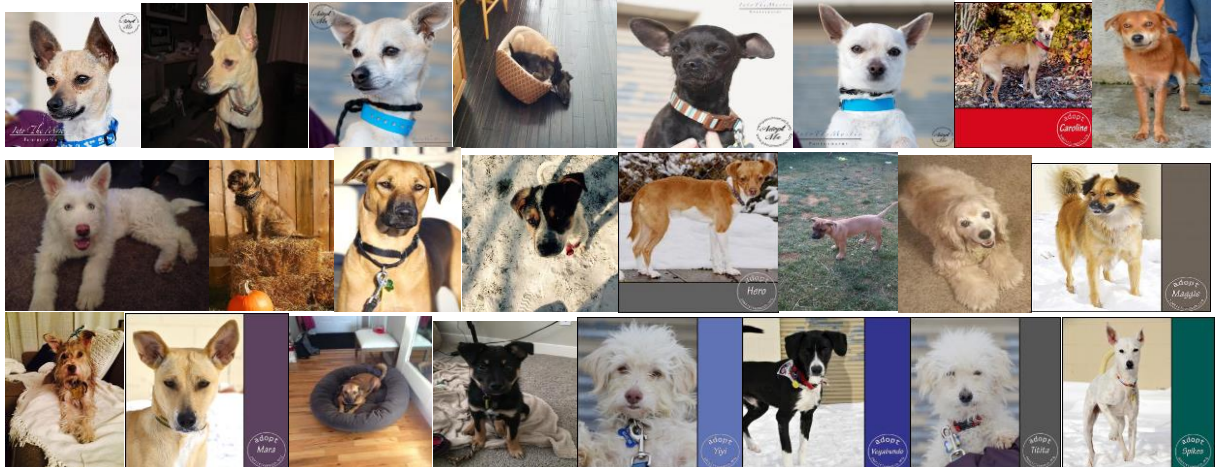
[Twitter](#)

[Instagram](#)

[Youtube](#)

[Blog](#)

# Adopted In February



Adopted but not pictured: Marco, Mateo, Jericho, Lala, Lucky, Chloe(2), Victoria, Piper, Chicago, Philly, Giacomo, Mona, Libby

## Volunteer of the Month: Marianne

I've been volunteering with Pawsitive Match for nearly a year. I enjoy walking, feeding, cleaning and cuddling. More recently I've added training and evaluating to the list. I enjoy visiting fosters and working with them to better understand their dog's behavioural needs. While I like all dogs, I have a special place in my heart for special needs and senior dogs. Hospice care is also dear to my heart. Hospice care is designed for dogs nearing end of life and the philosophy behind the model is to provide quality of life for the dog while supporting the family caregiving team. It's estimated that nearly 30% of Calgary dogs are senior and yet we know little about changing exercise, nutritional, and environmental needs for older dogs. I continue to increase my knowledge and am currently working on additional certification.



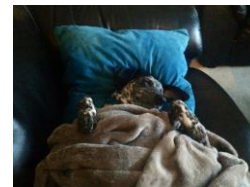
## Happy Tails



"Rabbit has definitely settled in, and is keeping us very busy. She plays very hard with our other dog, and chews up everything in sight. My kids absolutely love her, so all is good."



"Ely (renamed Penny) has been great! She has really settled in and we are seeing more and more of her personality every day. As you can see in the pictures, she and Bozley are both quite happy with each other!"



"Paisley LOVES to cuddle and follows us around wherever we go. We've introduced her to the off-leash parks and discovered that she loves to be chased. We couldn't be happier with her and are so thankful to Pawsitive Match for bringing her into our lives."